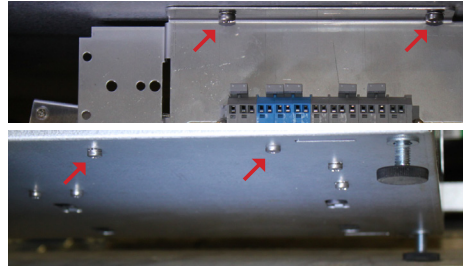
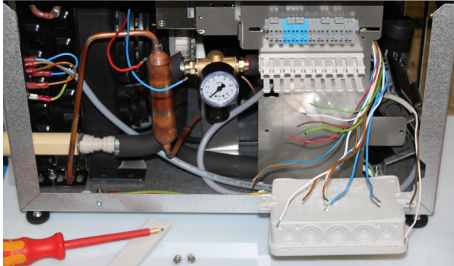
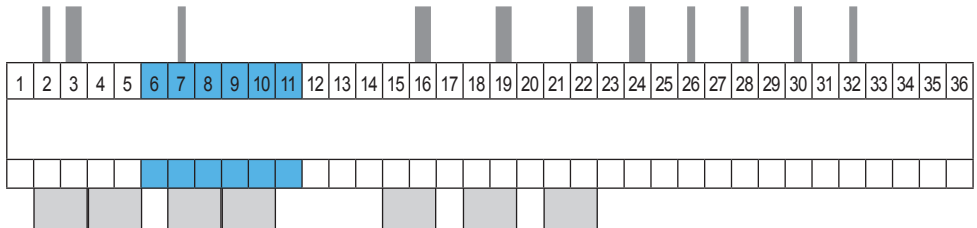


## Disconnecting of the installed wiring

- 1 Remove the left machine side panel.
- 2 Loosen the screws, remove the white terminal box from the metal sheet.
- 3 Disconnect all cables from the terminal strip.
- 4 Push the white fastening and remove the power supply box from the metal sheet.
- 5 Loosen the 4 screws, take out the metal sheet.



## Portion Control Unit (pre-wired)



## Installation of the portion control unit / Connecting the wiring

**6** Put the two (left arrows) cables from the power supply box in the terminals:

red cable ▷ pos. 1

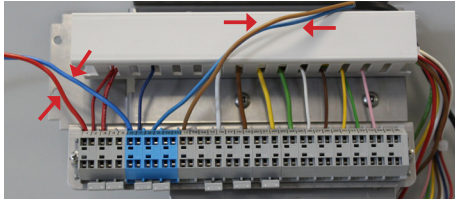
blue cable ▷ pos. 6

**7** Put the two cables (right arrows) from the fan box in the terminals:

brown/red cable ▷ pos. 12 (digital thermostat)

▷ pos. 4 (mech. thermostat)

blue cable ▷ pos. 8



**8** Connecting the **thick** cables:

blue cables ▷ pos. 9 and 10

white cable ▷ pos. 15

brown cable ▷ pos. 18

yellow cable ▷ pos. 20

green cable ▷ pos. 23

**9** Connecting the **thin** cables:

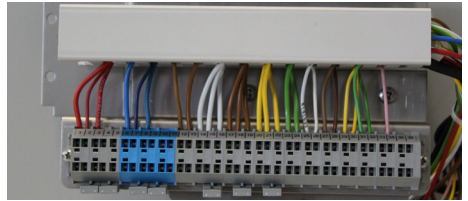
white cable (juice 1) ▷ pos. 25

brown cable (juice 2) ▷ pos. 27

yellow cable (juice 3) ▷ pos. 29

green cable (water) ▷ pos. 31

pink cable (if available) ▷ pos. 33



**10** Now put the portion control unit inside the machine and fix it with 4 screws.

**Attention!** The holding plates for the thermostates may need to be removed.

**11** Mount the power supply box at the backside of the portion control unit.

**12** Mount the white terminal box on the front-side of the portion control unit.

**13** Mount side panel on the machine.

